



National Emergency Operation Centre (NEOC)

Situation Report #2 – Hurricane Beryl

Data reported as at 8:00PM, Wednesday, July 03, 2024

1. Situation Overview

The Hurricane Warning is still in effect for Jamaica, while Hurricane Beryl remains close to the southwestern coast of Jamaica. This means that conditions associated with a hurricane are expected to continue affecting sections of the island. At 7:00 p.m. the centre of Hurricane Beryl was located near latitude 17.5 degrees North, longitude 77.6 degrees West. This is about 115 km (72 miles) south-southeast of Negril Point, Jamaica. Beryl is moving toward the west-northwest near 31 km/h (20 mph) and this general motion should continue through this evening, followed by a turn more toward the west tonight or Thursday. On this forward track, the centre of Hurricane Beryl will continue past the southwestern coast of Jamaica this evening and then near or over the Cayman Islands tonight or early Thursday.

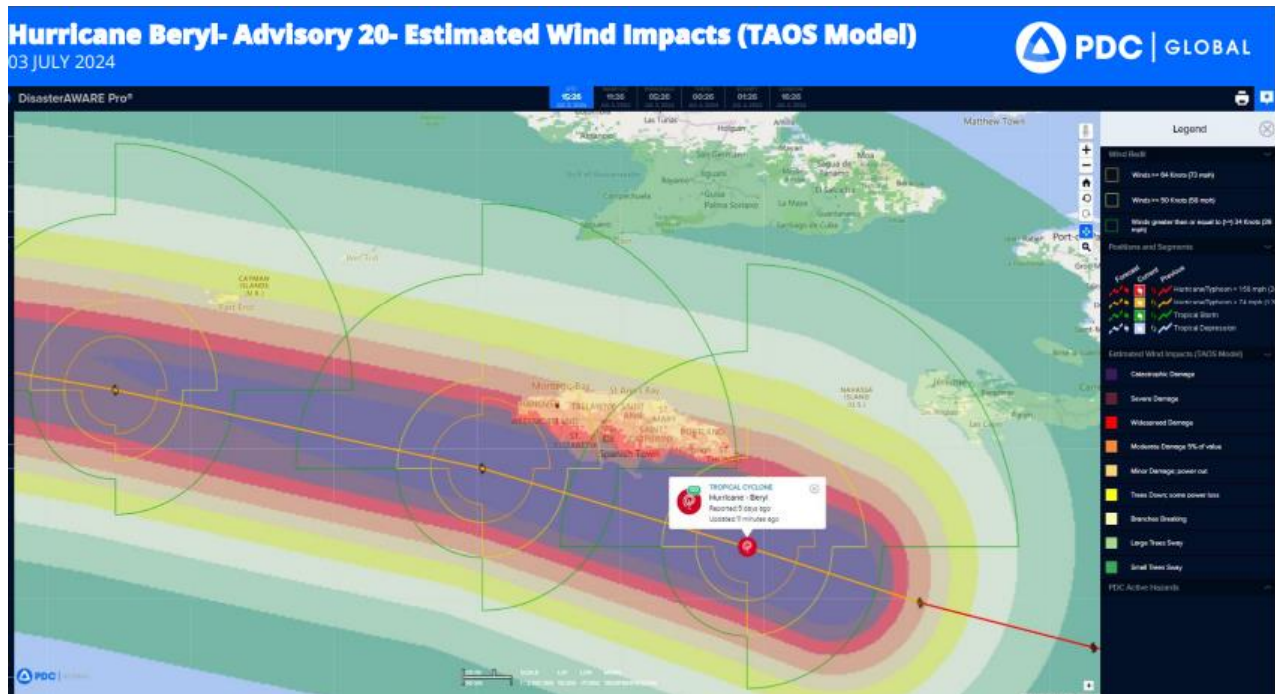
Maximum sustained winds are near 220 km/h (140 mph), with higher gusts; and Beryl remains a Category 4 hurricane on the Saffir-Simpson Hurricane Wind Scale. Some weakening is forecast during the next day or two and Beryl is forecast to be at or near major hurricane intensity as it moves away from Jamaica today and near to the Cayman Islands tonight or early Thursday. Hurricane-force winds extend outward up to 75 km (45 miles) from the centre and tropical-storm-force winds extend outward up to 295 km (185 miles). There are confirmed reports of sustained winds reaching tropical storm force over sections of Jamaica, as well as gusts to hurricane force in some areas.

Rainfall associated with Hurricane Beryl will continue across sections of mainly central and western parishes, and may be accompanied by strong, gusty winds as the eye moves away from the west coast of the island. Rising water levels will continue to affect coastal areas of southwestern parishes while Beryl remains in the vicinity and all small craft operators are urged to remain in port until sea conditions return to normal.

Hurricane Beryl made landfall at 5:00PM, July 3, 2024.



Figure 1: Map showing projected path of Hurricane Beryl and estimated wind impacts as at July 03, 2024



Courtesy of the Pacific Disaster Center, Disasteraware.

2. Emergency Shelters

Emergency shelters activated across twelve (12) parishes.

Parish	Emergency Shelter Activation Status
Kingston and St. Andrew	39 Shelters Activated
St. Thomas	--
St. Catherine	17 Shelters and 3 Temporary Shelters Activated
Portmore	7 Shelters Activated
Clarendon	14 Shelters including 1 Drop-In Centre Activated
Manchester	6 Shelters Activated
St. Elizabeth	27 Shelters Activated
Westmoreland	10 Shelters Activated
Portland	12 Shelters Activated
St. Mary	9 Shelters Activated
St. Ann	10 Shelters Activated
Trelawny	5 Shelters Activated
St. James	33 Shelters Activated
Hanover	6 Shelters Activated
TOTAL	159 Shelters Activated



Parish	Name of Shelter	No. of persons	Shelterees' Description					Remarks	Parish Totals
			Male	Female	Children (5 & over)	Children (under 5)	Vulnerable persons		
Kingston and St. Andrew	Papine Primary	3	3					elderly	318
	Melrose Primary	8	3	5					
	Edith Dalton High School	10	6	4					
	Harbour View Primary	1							
	Clan Carthy Primary	7	4	3				The majority of persons are senior citizens over 75 years of age	
	August Town Primary	2	2						
	Golden Spring Primary								
	Majestic Gardens	36	20	16					
	Papine High School	11	7	2		3		1 elderly female in the number	
	Friendship Brook Primary	13	5	3	5				
	Somerset Infant and Primary	30							
	National Arena	34	23	10		1			
	Stony Hill Technical	3		1					
	Kingston Technical	9	2	6		1			
	St. Michaels Primary	52							
	New Providence Primary								
	Haile Selassie High	2							
	Pembroke Hall High	8	3	5					
	Denham Town High		1	3	4				
	Golden Spring Primary	7	4	2	1				
	Holy Family								
	Harbour View Primary								
	Windward Road Primary	25	4	7	14				
	Riverton Meadows								
	Seaview Gardens								



Parish	Name of Shelter	No. of persons	Shelterees' Description					Remarks	Parish Totals
			Male	Female	Children (5 & over)	Children (under 5)	Vulnerable persons		
	Allman Town Primary	12		1	3				
	Nannyville Gardens Community Center								
	Tarrant High	5	1	4				1 elderly female in the number	
	Howard Cooke Community Center								
	Constitution Hill								
	Unity Primary	2	1	1					
	Red Hills Primary	2	2						
	St. Richards Primary	1	1						
	Marverly Primary	9							
	Norman Gardens High	3							
	McGregor Gully Community Center	9	4	5					
	Balcmobe Drive Primary	7	2	3		2			
	Oak Glade Community Center	1							
	Constant Sprig Primary	6	4	2					
Clarendon	Croffs Hill Primary	7							65
	Cross Primary & Infant	4		1	3				
	Moore's Primary	2		2					
	Scotts Pass Primary								
	Hazard Primary & Junior High	2	1	1					
	Mount Providence Primary	2	2					elderly males	
	Denbigh High	1	1					elderly male	



Parish	Name of Shelter	No. of persons	Shelterees' Description					Remarks	Parish Totals
			Male	Female	Children (5 & over)	Children (under 5)	Vulnerable persons		
	Silent Hill Community Center	4	4					1 - 56 year cancer patient is present at shelter. Dr. visited and provided medical and other supplies. Persons doesn't need to be relocated	
	Frankfield Primary School	1						mental health team on location	
	Clarendon Drop In Shelter	9	9						
	Brandon Hill Primary								
	Bucknor Community Center	3							
	Portland Cottage Primary	5							
	Rocky Point Community Center	25							
Westmoreland	Godfrey Stewart High	1	2	1					1



Parish	Name of Shelter	No. of persons	Shelterees' Description					Remarks	Parish Totals
			Male	Female	Children (5 & over)	Children (under 5)	Vulnerable persons		
St. Mary	Gayle Primary School	7							10
	Horace Clarke High School	2							
	Port Maria High School	1							
	Heartland Basic School								
	Oraccabessa High								
	Retreat Primary								
	Mt Angus Primary								
	Enfield Primary								
	Ramble Primary								
	Gallina SDA								
St. Catherine	Spanish Town Primary School	5							182
	Old Harbour High School	109	34	48	25	2		An elderly female (104) was evacuated to St. Catherine Infirmary from Old Harbour Bay Community for safety and wellbeing	
	Enid Bennett High	2							
	Wakefield High School	3							
	Troja Primary	2							
	Gwenniel Basic School	2							
	Browns Hall Primary	2							
	Tacius Golding High	1							
	Mt Nebo Primary	1							
	Troja Seven Day Adventist	7							
	Glade Community Center	15							
	Old Harbour Primary	3							
	Glengoffe High	4							
	Guys Hill High	2							



Parish	Name of Shelter	No. of persons	Shelterees' Description					Remarks	Parish Totals
			Male	Female	Children (5 & over)	Children (under 5)	Vulnerable persons		
	Ensom City Primary	2							
	Linstead Primary	7	2	1	4				
	Innswood High	15							
Portmore	Kensington Primary								23
	Bridgeport High	2	1	1					
	Portsmouth Primary								
	Gregory Park Primary	10	2	7	1				
	HEART Academy	5		3					
	Hellshire United Church	4							
	Glad Tidings Church	2		2					
St. Elizabeth	Nain High School	7							77
	Park Mountain Primary								
	Brompton Primary								
	Black River Primary								
	Barbary Hall Primary	1							
	Aberdeen High School	3							
	Lititz Primary & Infant	8							
	Lacovia Primary & Infant	1							
	Santa Cruz Primary & Infant	31			8				
	Retirement Primary	17							
	Magotty High	2							
	White Hill Primary								
	Park Mountain Primary								
	Pedro Plains Primary	1							
	Roger Clarke High								
	Geneva Primary								
	Newell High	3							
	Ballards Valley								



Parish	Name of Shelter	No. of persons	Shelterees' Description					Remarks	Parish Totals
			Male	Female	Children (5 & over)	Children (under 5)	Vulnerable persons		
	Cransbrook Primary								
	BB Coke High	2							
	Brays River Primary								
	Middle Quarters Primary	1							
	Mayfield Primary								
	Sydney Pagan								
	Brinkley Primary								
	Bulls Savannah Primary								
	Hodges Land Baptist								
St. Thomas									0
Manchester	Greenvale Community Center	1	1						14
	New Forest Primary & High	2	2						
	Porus Primary	5	1	1		3			
	Sommerset	3	1	2					
	Christiana High School	2	2						
	Bellefield High School	1	1						
St. Ann								0	



Parish	Name of Shelter	No. of persons	Shelterees' Description					Remarks	Parish Totals
			Male	Female	Children (5 & over)	Children (under 5)	Vulnerable persons		
Hanover	Gurneys Mount	4							27
	Mt Peto	1							
	Sandy Bay Primary	1							
	Middlesex Primary	8							
	Cave Valley Primary	12							
	Askenish Primary	1							
St. James	Jarrett Park	11	10	1					140
	Mafoota Community Center	2	1		1				
	Barrette Town Primary								
	Bogue Hill SDA	1	1						
	Cambridge Primary								
	Salt Spring SDA	1		1				90year old	
	Maldon High	7							
	Flanker Primary	3	3						
	Green Pond High								
	Orange Hill Primary	6		3	3				
	Sommerton Primary	1	1						
	Lottery Primary	8	3	5					
	Glendevon Primary								
	Anchovy High	3	3						
	Cornwall College	5	3	2				Includes 1 person who is over 70 years old	
	Bickersteth Primary								
	Redding Catholic								
	Springfield Baptist	3							
	Roehampton SDA	2	2						
	Hampton SDA								



Parish	Name of Shelter	No. of persons	Shelterees' Description					Remarks	Parish Totals
			Male	Female	Children (5 & over)	Children (under 5)	Vulnerable persons		
	Grancille Primary	2	2						
	Albion Primary								
	Buckingham Primary								
	Mt. Zion Primary	5	2		3				
	Unity Hall Open Bible								
	Dumfries Primary	3	1	2					
	Montego Bay Convention Center	50						From the Zoetry Hotel	
	Harrison High	3	1	2					
	Rose Heights								
	Palmyra Son	4		1	3				
	Sudbury Primary	13							
	adelphi Primary	4	1	2	1				
	Flanker SDA	3	2	1					
Trelawny	Williams Knibb Memorial High	2	1	1					113
	Albert Town High	2	2						



Parish	Name of Shelter	No. of persons	Shelterees' Description					Remarks	Parish Totals
			Male	Female	Children (5 & over)	Children (under 5)	Vulnerable persons		
	Hague Primary School	104						includes 54 residents from Trelawny Infirmary, 9 staff members, 35 patients from Cornwall regional Social cases, 4 staff members	
	Cedric Titus High	1	1					elderly	
	Bunkers Hill Community Center	4							
Portland	Bellevue Primary								0
	Skibo Primary								
	Poincianna Park Community Center (Fairy Hill)								
	Windsor SDA Church								
	SDA Scotts Run Church								
	Happy Grove High								
	Drapers Primary								
	Mt Pleasant Primary								
	Mt Pleasant City Mission Church								
Grand Total		970							970



ODPEM EMERGENCY SHELTERS



0 5 10 20 30 40 Miles

July 3, 2024 | ODPEM

Prepared by: National Emergency Operation Center (NEOC)



Shelters activated in St. Ann will be reflected on the shelter map in Situation Report 3



3. Communities Affected

As at Wednesday, July 03, 2024, southern, eastern and north-central parishes have received periods of showers from the outer bands of the hurricane, however, there have been no reports of impact to communities islandwide.

Table 3: Communities Affected

Parish	Community/Area	Impact	Casualties	Action Taken
KSA	Temple Hall	Fallen Trees		---
	Havendale	Power Outage		
	Port Royal	Vicinity of the light house impassable due to storm surge		Nationwide FM went to assess scene and took video footage
		Roof at the departure gate at Norman Manley International Airport damaged		
	Caribbean Terrace	Flooded (4 children stranded)		
	Long Wall, Stony Hill	Main road blocked by tree		NWA notified
	Rocky Valley, Stony Hill	Wind Damage, homes destroyed		
	Diamond Road, Stony Hill	Blocked roads		
	Temple Hall Main Road	Blocked Roads – Landslide and fallen trees		
	Collie Smith Gully	1 man washed away in gully		
	Duhaney Park	New Haven flooded		
	Landlease, Papine	9 persons (5 adults and 4 children)		They were rescued by the



Parish	Community/Area	Impact	Casualties	Action Taken
		were trapped in another home in the Landlease area.		JFB. The house was severely damaged by the fallen tree.
	Trench Town	20 yr old male washed away in Collismith Gully	Death not confirmed	
St. James	John's Hall Main Road	Blocked Roads		
St. Catherine	Rose Mount Housing Scheme	Down Powerlines		
	Linstead	Down Powerlines		
	Rivers Dale	Down Powerlines		
	Lluidasvale	Down Powerlines		
	Bog Walk Above Rocks	Main road in the vicinity Edwards Piece is impassable due to landslide		
	Bog Walk Roundabout	Fallen Trees		
	Knollis Main Road	Fallen Trees		
	Berwick Main Road	Fallen Trees		
	Mickelton	Fallen Trees on a JPS power line		
	Edward Piece	Landslide		
	Bog Walk Gorge	Flood gates closed		Bog Walk Gorge Flood Control Gates were closed at 12:50 PM, Jul 3, 2024 by the JFB and JCF
	Guys Hill	Power Outage		
	Commodore	Down Powerlines		



Parish	Community/Area	Impact	Casualties	Action Taken
	Riverside	Roadway impassable		
	Dunbeholden Road	Road impassable		
	Vanity Fair Main Road	Road impassable		
	Linstead	Linstead Police Station and courthouse flooded		
	Old Harbour	Fallen tree in Old Harbour Town		
		Stalls at Old Harbour Fishing Village damaged		
	Sligoville	Several fallen trees along the Sligoville main road. Roadway is completely impassable		
Clarendon	Chateau Road, Plamer Cross	Power Outage		
	Portland Cottage	Roof blown off Portland Cottage Primary School		
St. Thomas	Hordley Cross	Flood water level rising		
	Duhaney Pen	Storm surge		
	Serge Island main road	Fallen tree along Serge Island main road, St. Thomas		
Trelawny	Granville Main Rd	Fallen Tree		JCF responding
	Miller's Drive	Fallen Tree on house		JFB responded



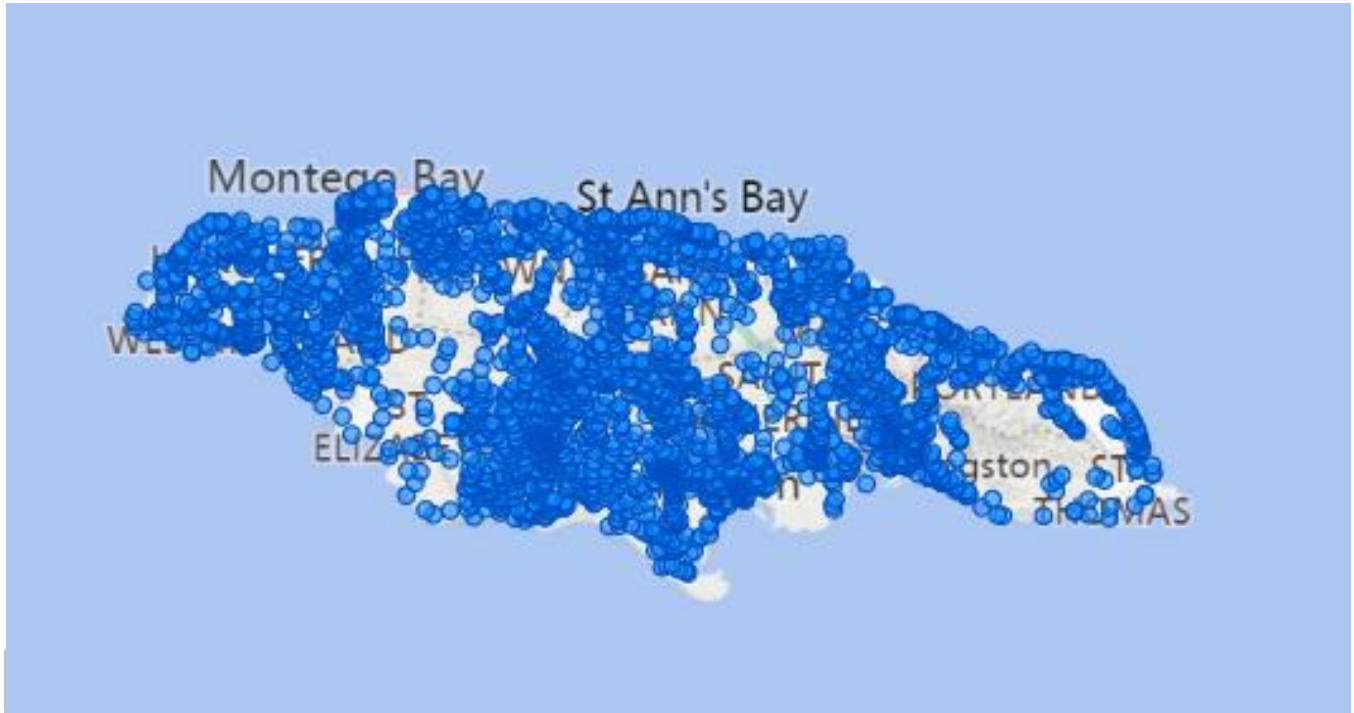
Parish	Community/Area	Impact	Casualties	Action Taken
	Tryall Main Road	Fallen Tree, road impassable		
	Daniel Town main road	Fallen tree, blocked road		
Manchester	Hanbury District	Fallen Tree on house		
	Holmwood High School	Wind damage, roof blown off		
	Denham Farm to Huddersfield thoroughfare	Downed utility pole blocking roadway		
	Silent Hill	Roof blown off house		
	Mandeville	Roof blown off DeCarteret College		
Hanover	Kingsvale main road	Fallen tree, road impassable		
	Green island	A tree fell on a lady at Beach Road, Green Island	1 Fatality 26 yrs old female	<p>The JFB responded to a special service of a tree that fell on a lady at Beach Road, Green Island.</p> <p>Upon the arrival of the fire unit and ambulance team they observed the tree on an adult female.</p> <p>The tree was cut and removed off her.</p> <p>Further checks revealed that she</p>



Parish	Community/Area	Impact	Casualties	Action Taken
				is breathless, pulseless and pupils fixed and dilated.
St. Elizabeth	Gutters to Tombstone thoroughfare	Blocked road		
	Tombstone to Luana thoroughfare in the vicinity of Holland Bamboo	Blocked road		
	Nain to Junction thoroughfare	Block road		
Westmoreland	Hatfield	A lot of persons are marooned and in need of evacuation at Hatfield Housing Scheme		
St. Mary	Belfield Pen	Fallen Trees		
St. Ann	Pending			



JPS Power Outages Island wide as at July 3, 2024



Hurricane Beryl

Parish Feeder Job Step	Customers Out
<input type="checkbox"/> Administration	9
<input type="checkbox"/> St. Thomas	10
<input type="checkbox"/> Portmore	77
<input type="checkbox"/> KSAS	454
<input type="checkbox"/> St. Elizabeth	5873
<input type="checkbox"/> Manover	11633
<input type="checkbox"/> Portland	15293
<input type="checkbox"/> Westmoreland	19476
<input type="checkbox"/> St. Catherine	22689
<input type="checkbox"/> Trelawny	25814
<input type="checkbox"/> St. Mary	33046
<input type="checkbox"/> St. Ann	38059
<input type="checkbox"/> Manchester	45780
<input type="checkbox"/> Clarendon	49238
<input type="checkbox"/> KSAN	55831
<input type="checkbox"/> Up Park Camp - 410	56147
Total	1
	456816



4. Actions Taken

OPM

- The Prime Minister has issued the Disaster Risk Management (Enforcement Measures) (Hurricane Beryl) Order 2024, declaring Jamaica as a disaster area in effect Wednesday, July 03, 2024 and remaining in effect for the next 7 days. Orders pertaining to evacuation of 'low-lying and flood-prone areas and persons not identified as authorized officers must be in a place of abode (inclusive of shelter are in effect as of Wednesday, July 03, 2024 6:00am until 6:00pm. *See Appendix 5.*

ODPEM

- The ODPEM has activated the NEOC at Level 1 as of Monday, July 01, 2024 and escalated activation to level 3 as of Tuesday, July 02, 2024 at 10:00PM.
- An NEOC briefing was held with ODPEM staff and key agencies present in the NEOC at 11:45 PM.
- ODPEM has provided authorization for authorized personnel/ officers to move during the curfew hours, in accordance with the Disaster Risk Management (Enforcement Measures) (Hurricane Beryl) Order, 2024.
- Relief supplies prepositioned in various parishes. *See Appendix 6.*
- Radios have been tested for the Parish Emergency Operations Centre (PEOC)
- 26 UHF radios have been provided to the MOHW on July 02, 2024
- The Network Operations centre for radio communication is activated.
- On-going monitoring of the system's passage, bulletins from the Meteorological Service and reports from the Parish Disaster Coordinators.

Jamaica Red Cross

- In terms of non-food items, the Jamaica Red Cross has distributed blankets, cots, hygiene kits, tarpaulins and other relief items to the Ministry of Labour & Social Security, other partner agencies and communities to help prepare for the hurricane, with specific focus on the homeless, those in hospitals and shelters, and other vulnerable groups.
- The Mental Health and Psychosocial Support Team is on standby to provide psychosocial support to those affected by the hurricane.



- The St. Catherine branch of the Jamaica Red Cross distributed the following items to the Poor Relief Department in St. Catherine received 30 blankets and 5 tarpaulins, a 2-burner stove was sent to Old Harbour High School shelter and the Portmore Municipal Corporation received 60 blankets.

MLSS

- Hygiene kits were distributed to the shelters. Food packages are being prepared for distribution to shelter that will still be open after the passage of the hurricane.

Meteorological Service of Jamaica

- Ongoing releases of Bulletins and monitoring of Hurricane Beryl passage across the island.

JCF

- All island curfew in place from 6:00am to 6:00pm, Wednesday July 3, 2024, to ensure the safety of population during the passage of the hurricane.
- Heavy rainfall reported in sections of St. Thomas and Old Harbour, St. Catherine.
- Members of St. Catherine South Division of the JCF evacuated persons from sections of Old Harbour Bay. 70 people have been taken to the Old Harbour Bay High School, which is the designated shelter for the area.

JFB

- Boats in Newport East in Kingston and Freeport in St. James have been moved to dry dock.
- All fire stations are manned and swift water rescue teams with dinghy boats are stations at St. Mary, Portland, KSA, St. Catherine and St. James.

JDF

- The DART Team has been mobilized and are on standby to respond in the event of an incident
- Personnel Mobility Vehicles (PMVs) have been mobilized inclusive of the ambulance variants have been deployed to all 3 JDF geographical commands
- Assets for Humanitarian Aid and Disaster Relief in place

Municipal Corporations

- **St. Mary**
- PEOC was activated 2:00pm on July 2, 2024.



- **KSAMC**
- A 10 man Jamaica Red Cross team led by Ms Yvonne Nelson is supporting activities at the National Arena. Nineteen (19) persons currently sheltering at the National Arena.
- **St. Elizabeth**
- PEOC was activated 7:00am on July 3, 2024.
- **Westmoreland**
- PEOC was activated 5:30am on July 3, 2024.

JUTC

- Buses dispatched at 7:30am to Port Royal and Taylorlands for evacuation of residents
- Old Harbour Bay siren has been activated for evacuation-Evacuation is underway in Old Harbour Bay. Transportation by 2 JUTC buses with 70 persons evacuated to Old Harbour Bay High school - shelter. supported by St. Catherine South Police division.

JPS

- Ongoing meetings of the Central Emergency Operations Centre and islandwide branch EOC activated.
- No response will be made to individual cases of power outages until an All Clear is given following the passage of the hurricane. Only large-scale community outages will be prioritized.
- EOCs will remain activated but standing down on all restoration activities for the remainder of the day into tomorrow, July 4, 2024.
- Created the Power Outage Dashboard.

MOT and JTB

- The Tourism Emergency Operations Centre (TEOC) has been activated.
- Airports Closure on July 2, 2024.
- The Alert Module on visitjamaica.com was activated on July 1 with the Severe Weather Alert.
- The PR Team activated its crisis Communication plan with creating Pre-messaging for visitors and trade Partners.



- Trade Bulletins Targeting Travel Agents and MICE partners were developed to provided updates on the preparedness of the sector, airport closures, flight cancellation and rescue flights. Three bulletins were shared.
- Outreach was made to major international outlets from the United States to provide help with logistics while they are on island. Communication is ongoing with their teams to ensure they are guided approximately.

MOTM

National Road Operating and Constructing Company (Highway 2000 NROCC)

- Toll Roads now open for free passage with effect from 6:00pm, Tuesday July 02, 2024 until today, Wednesday, July 3, 2024.

MOHW

- The Health Emergency Operations Centre (HEOC) is fully activated.
- All health facilities have at least 3 days back up of water supply.
- 58 ambulances are fully operational islandwide.
- Vehicles in place for vector control and water monitoring.
- 26 UHF Radios were received from ODPEM and distributed to the MOHW Head Office and 4 Regional Health Authorities. To date SERHA and SRHA have received radios. WRHA and NERHA to collect radios later this week.
- Functional generators in place to maintain cold storage of vaccines at the Central Vaccine Storage Facility.
- National Public Health Lab have put arrangements in place for emergency operations at 4:00pm on July 02, 2024.
- FPGH: Loss of roof to female surgery. Three (3) patients and staff safely evacuated to Field Hospital.
- Hospitals continue to deliver service in emergency mode.

FLOW

- Emergency messages from the NEOC issued via SMS to the public



Digicel

- Several sites are out of power and relying on generators. Mainly in northeastern parishes St. Mary, Portland and southern, Manchester and St. Elizabeth. Westmoreland and Hanover. These areas not getting full coverage but are able to access from neighbouring towers.
- Coordinating with NWA to ensure access ways are safe and JCF for security as teams will assess the impacted sites for repairs following the passage of the hurricane. Only 25% of fixed line and cellular service impacted.

5. Actions to be Taken

ODPEM

1. To prepare letters for Authorization of Officers for the controlled movement during the curfew under the DRM Order 2024.

Municipal Corporations

1. Press releases will be issued in accordance with updates from the MSJ periodically.
2. Emergency Shelters to be activated if required.
3. Taylor Lands and Chalky River communities are scheduled for evacuation.

JFB

1. Staff at Port Royal Fire Station to be evacuated by July 4, 2024.
2. Brigaders are actively responding.

NERGIST

1. NERGIST to continue to provide ongoing support to NEOC.



6. Appendices

Appendix 1: Bulletin #20- Wednesday, July 03, 2024 at 8:00PM– Meteorological Service of Jamaica (MSJ).



METEOROLOGICAL SERVICE, JAMAICA
Branch of the Ministry of Economic Growth and Job Creation
Telephone: 876-924-8055/924-8404
FOR IMMEDIATE RELEASE: Wednesday, July 3, 2024 – 8:00 p.m.

BULLETIN No: 20

*** HURRICANE BERYL ABOUT TO BEGIN MOVING AWAY FROM JAMAICA...HURRICANE WARNING STILL IN EFFECT ***

The Hurricane warning is still in effect for Jamaica, while Hurricane Beryl remains close to the southwestern coast of Jamaica. This means that conditions associated with a hurricane are expected to continue affecting sections of the island.

At 7:00 p.m. the centre of Hurricane Beryl was located near latitude 17.5 degrees North, longitude 77.6 degrees West. This is about 115 km (72 miles) south-southeast of Negril Point, Jamaica.

Beryl is moving toward the west-northwest near 31 km/h (20 mph) and this general motion should continue through this evening, followed by a turn more toward the west tonight or Thursday. On this forward track, the centre of Hurricane Beryl will continue past the southwestern coast of Jamaica this evening and then near or over the Cayman Islands tonight or early Thursday.

Maximum sustained winds are near 220 km/h (140 mph), with higher gusts; and Beryl remains a Category 4 hurricane on the Saffir-Simpson Hurricane Wind Scale. Some weakening is forecast during the next day or two and Beryl is forecast to be at or near major hurricane intensity as it moves away from Jamaica today and near to the Cayman Islands tonight or early Thursday.

Hurricane-force winds extend outward up to 75 km (45 miles) from the centre and tropical-storm-force winds extend outward up to 295 km (185 miles). There are confirmed reports of sustained winds reaching tropical storm force over sections of Jamaica, as well as gusts to hurricane force in some areas.

Rainfall associated with Hurricane Beryl will continue across sections of mainly central and western parishes, and may be accompanied by strong, gusty winds as the eye moves away from the west coast of the island. Rising water levels will continue to affect coastal areas of southwestern parishes while Beryl remains in the vicinity and all small craft operators are urged to remain in port until sea conditions return to normal.

The Meteorological Service continues to monitor the progress of Hurricane Beryl and all interests are encouraged to pay special attention to further Releases.

The next Bulletin on this system will be issued at 11:00 p.m. today.

END



Appendix 2: Local Forecast - Wednesday, July 03, 2024 at 5:00PM– Meteorological Service of Jamaica (MSJ).



METEOROLOGICAL SERVICE

Branch of the Ministry of Economic Growth and Job Creation

Telephone: 876-924-8055/924-8404

FOR IMMEDIATE RELEASE: Wednesday, July 3, 2024 – 5:00 p.m.

BULLETIN No: 19

***** EYEWALL OF BERYL SKIRTING JAMAICA'S SOUTH COAST AS IMPACTS CONTINUE ACROSS THE ISLAND ... HURRICANE WARNING REMAINS IN EFFECT *****

The Hurricane Warning remains in effect as Hurricane Beryl continues to move close to the southern coastline of Jamaica with the following dangerous effects of a hurricane:

- Dangerously high water or a combination of dangerously high water and exceptionally high waves, and
- Average winds of at least 119 km/h (74 mph).

At 4:00 p.m. the centre of Hurricane Beryl was located near latitude 17.5 degrees North, longitude 77.6 degrees West. This is about 40 km (25 miles) south of Alligator Pond, or 117 km (72 miles) east-southeast of Negril Point, Jamaica.

Beryl is moving toward the west-northwest near 31 km/h (20 mph) and this general motion should continue through this evening, followed by a turn more toward the west tonight or Thursday. The centre of Hurricane Beryl is expected to continue moving adjacent to the southern coastline of Jamaica this afternoon before moving away from the island during the evening.

Maximum sustained winds have decreased to near 220 km/h (140 mph), with higher gusts; and Beryl remains a Category 4 hurricane on the Saffir-Simpson Hurricane Wind Scale. Some weakening is forecast during the next day or two and Beryl is forecast to be at or near major hurricane intensity as it moves away from Jamaica today and near to the Cayman Islands tonight or early Thursday.

Hurricane-force winds extend outward up to 75 km (45 miles) from the centre and tropical-storm-force winds extend outward up to 295 km (185 miles).

Rainfall associated with the core of the hurricane will continue to spread across the island for another several hours, and accumulations of 100-200 millimetres (4-8 inches) are expected today.

Strong winds, reaching near hurricane force, are expected over sections of mainly southern parishes today as the eye of Beryl move close to the coast. Tropical storm force winds are also likely over other parts of the island.

Dangerous storm surges raising water levels by as much as 2-3 metres (6-9 feet), and battering waves, will continue to affect coastal areas of the island, especially of southern parishes.

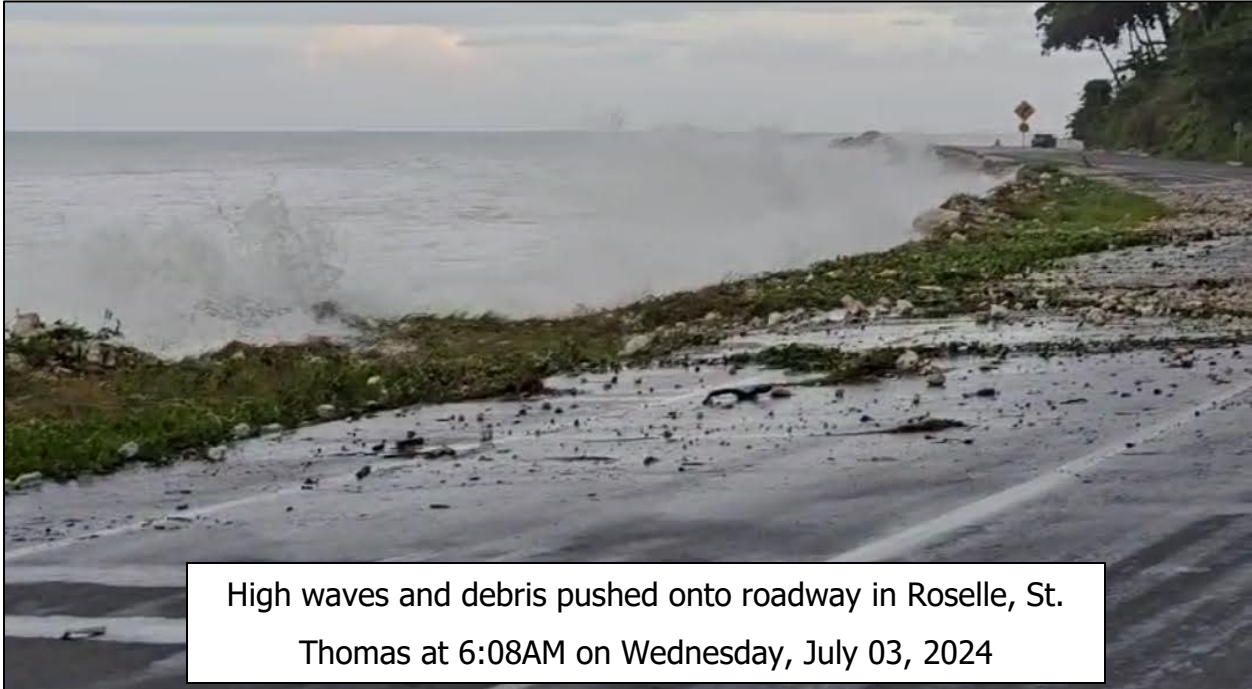
The Meteorological Service continues to monitor the progress of Hurricane Beryl and all interests are encouraged to pay special attention to further Releases.

The next Bulletin on this system will be issued at 8:00 p.m. today.

END



Appendix 3: Pictures of Impacts From Passage of Hurricane Beryl





Collapsed dwelling in Rocky Valley, Stony Hill, St. Andrew, Wednesday, July 03, 2024



Fallen tree on the Granville Main Road. Police responding to clear blockage, Wednesday, July 03, 2024



Fallen tree on house on Miiller's Drive, Lucea, Hanover. JFB on site to resolve the issue, Wednesday, July 03, 2024



Broken tree in front of the Old
Harbour Police Station Road.
Wednesday, July 03, 2024



Water Tank blown from structure and onto a car
causing damages, Wednesday, July 03, 2024



Fallen tree along Serge Island main road, St. Thomas, Wednesday, July 03, 2024



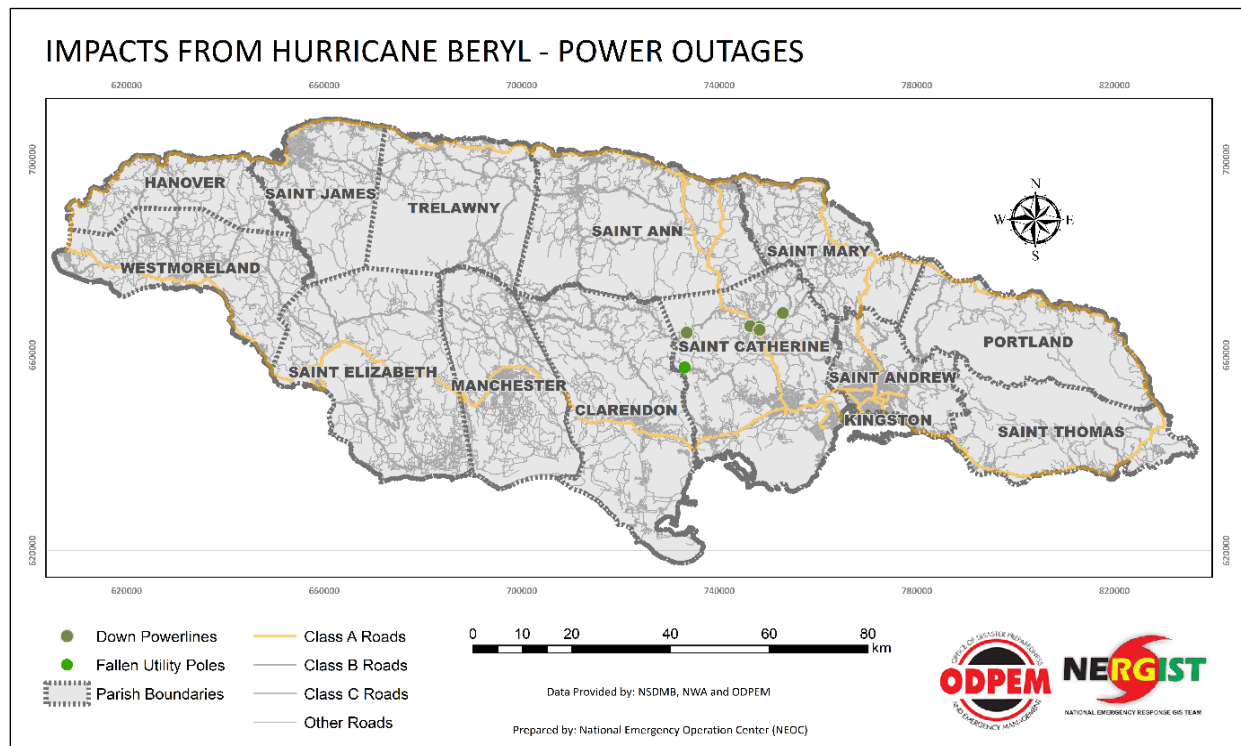
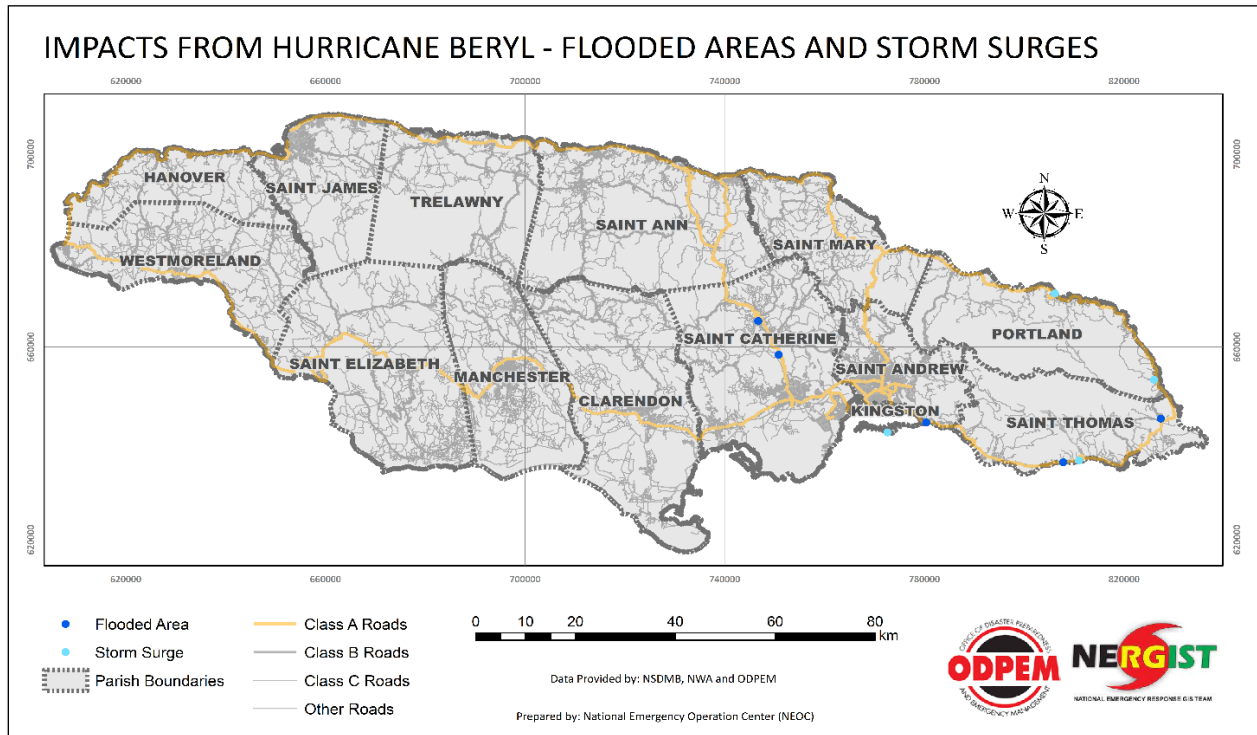
Fallen tree in Old Harbour Town, St. Catherine, Wednesday, July 03, 2024

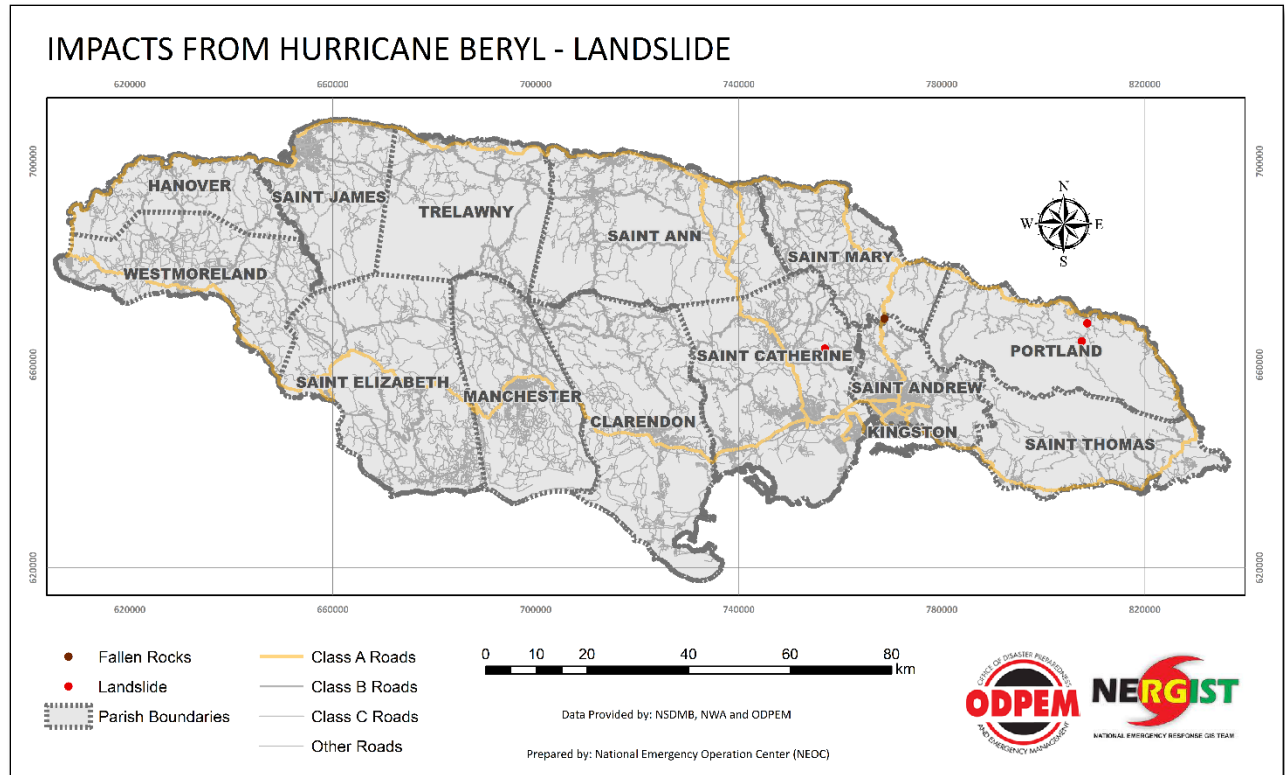


Roof blown off from Ocean 7 Rooftop Bar and Grill establishment, Wednesday, July 03, 2024



Appendix 4: Incidents Maps as at July 3, 2024





Appendix 4: Prepositioned Relief Supplies by the ODPEM as of July 2, 2024.

Goods prepositioned at Parish Warehouse		
Unit	Item	Quantity
Trelawny Municipal Corporation		
Each	Tarpaulin (24x40)	5
Each	Tarpaulin (16x20)	10
Each	Tarpaulin (20x30)	35
Each	Flashlight	5
Each	Batteries	40
Each	Lantern	10
Each	Raincoats (XL)	5
Each	Raincoats (Large)	5
Each	Raincoats (Medium)	5



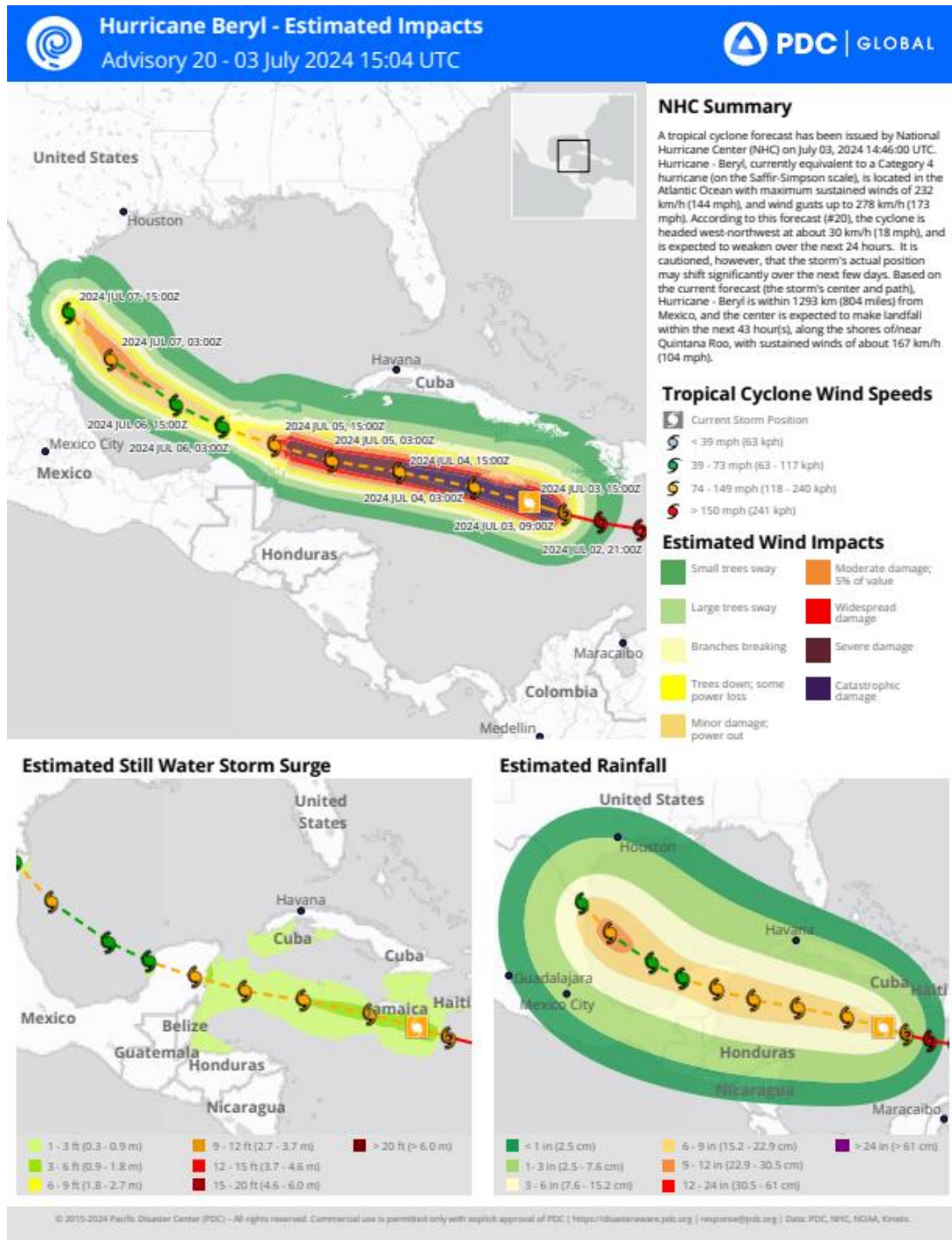
Goods prepositioned at Parish Warehouse		
Unit	Item	Quantity
Each	Blankets	30
Each	Water boots	15
Each	Water Bottle	10
Each	Mattress	20
Each	Cots	10
Each	Foam Pads	10
Each	Sheet Sets	21
Clarendon Municipal Corporation		
Unit	Item	Quantity
	Tarpaulin (24x40)	10
	Tarpaulin (16x20)	10
	Tarpaulin (20x30)	30
	Mattress	20
	Lantern	10
	Flashlight	5
	Batteries	40
	Blankets	30
	Raincoats (XL)	5
	Raincoats (Large)	5
	Raincoats (Medium)	5
	Water boots	15
	Garbage Bags	16
	Cots	20
Kingston Arena		
Each	Foam Pad	50
Each	Blankets	100



Goods prepositioned at Parish Warehouse		
Unit	Item	Quantity
Each	Cots	100
Bottle	Bleach	1
Bottle	Disinfectant	4
Each	Tissues	12
Each	Hand Towel	6



Appendix 7: Estimated Impacts of Hurricane Beryl on Jamaica, courtesy of Pacific Disaster Center, Disasteraware.



- End -