



FEDERATED STATES OF MICRONESIA: TYPHOON SINLAKU

Chuuk Disaster and Emergency Operation Center (CDEOC), Chuuk State

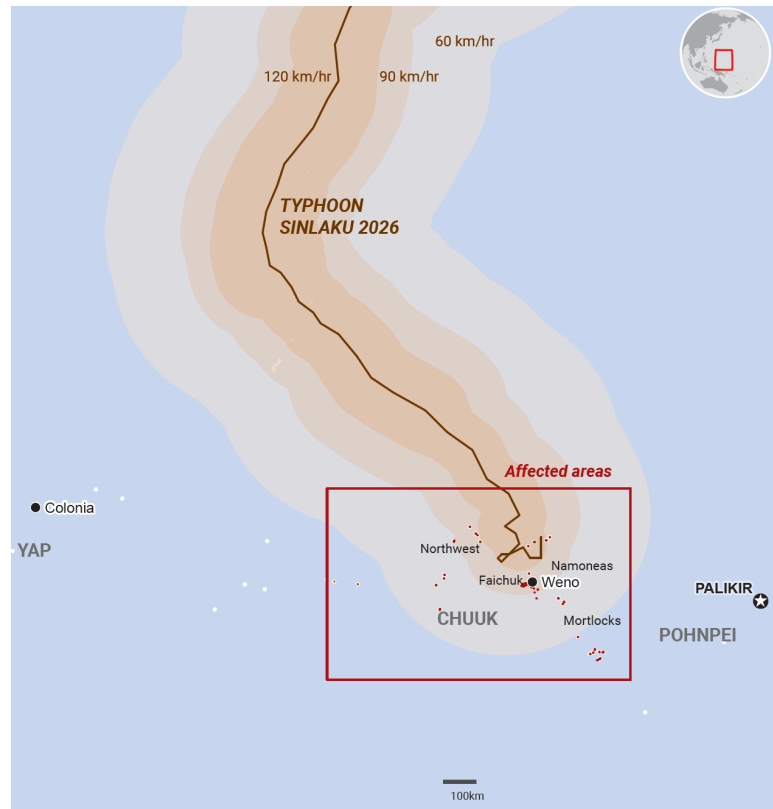
Situation Report No. 8 - 01 May 2026

This report is produced by the Chuuk Disaster and Emergency Operation Center (CDEOC) in collaboration with humanitarian partners and OCHA/UNDAC. It covers the period from 25 - 30 April 2026.

For three days in early April 2026, Chuuk State and two municipalities in Yap were battered by Typhoon Sinlaku as it moved NW across the Pacific. Its enormous power brought it far to the north of the Pacific where it eventually dissipated on the 20th.

It reached wind speeds of up to 177 mph on April 13 near Weno and its diameter covered a vast 113 miles. The Saffir-Simpson system classified Sinlaku as a category 5 typhoon. It hung just to the north of the Chuuk lagoon for 3 days, exacerbating the impact of the event.

The system brought destructive winds, heavy rainfall, storm surges, saltwater intrusion, and prolonged service disruptions. While the immediate cyclone threat has passed, humanitarian needs remain significant, particularly for safe water, food, shelter, health risk mitigation, access, and the restoration of essential services.



Source: OCHA HDX, GDACS and IDA
The boundaries and names shown and the designations used on this map do not imply official endorsement or acceptance by the United Nations.

HIGHLIGHTS

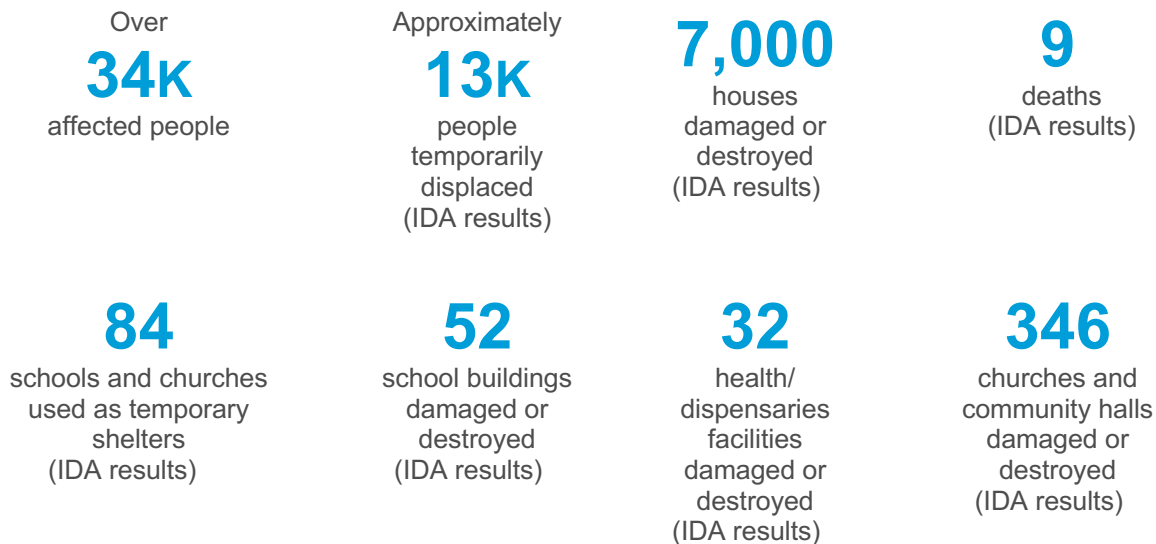
- The President of FSM visited Chuuk State to oversee response implementation and integration of national and state support capabilities
- The United Nations Resident Coordinator (UN RC) visited Chuuk State to drive forward the UN support to response efforts
- Health and immunization teams visited the islands of Murino, Ruo, Fananu and Nomwin in the Northwest and in the lagoon islands, Parem, Uman, and Fefan
- 30-day food supplies are being distributed across the state
- Delivery of emergency supplies of non-food items continued across the state with CDEOC and IOM/UNICEF coordination on distributions in Iras, Weno and Fanapanges Island and the Mortlocks
- Pacific Risk Catastrophe Risk Insurance Company (PCRIC) allocated 375,000 USD and the UN Central Emergency Relief Fund (CERF) allocated 1m USD to support the scale-up of the response

Analysis:

- Catastrophic damage to life support systems has taken place - food, water, shelter - particularly on remote islands. The situation is compounded by the global cost of living crisis
- The main transportation method is by motorboat. Inter-island transportation is extremely costly particularly in terms of fuel
- On-island food and resources to purchase food have been decimated

Key Requirements

- Emergency WASH reverse osmosis, groundwater decontamination and rain water catchment.
- Ensure emergency provision of emergency WASH and food support on identified requirements.
- Ensure affordable access to fuel for both affected populations and emergency responders.

KEY FIGURES**SITUATION OVERVIEW**

Access and logistics remain the principal operational constraints. Weno port and wharf infrastructure were damaged; damaged vessels in port continue to present navigational and environmental risks; and high fuel costs and long maritime distances continue to limit access to remote islands. Main-island road clearance, utility restoration, and port access have improved since the first week of the response, but outer-island access remains uneven and dependent on maritime capacity.


Following on from state and national level declarations (12&13 April respectively), a request for international assistance was issued on the 23rd. The Initial Damage Assessment (IDA) has been completed and the data is being analyzed. Preliminary analysis has indicated a sufficiently concerning situation to initiate preparations for the Joint Disaster Assessment (JDA), implemented under the auspices of the Compact of Free Association (COFA) with the United States of America (USA), a process to reflect FEMA assistance - from IDA to JDA to full reconstruction and recovery program

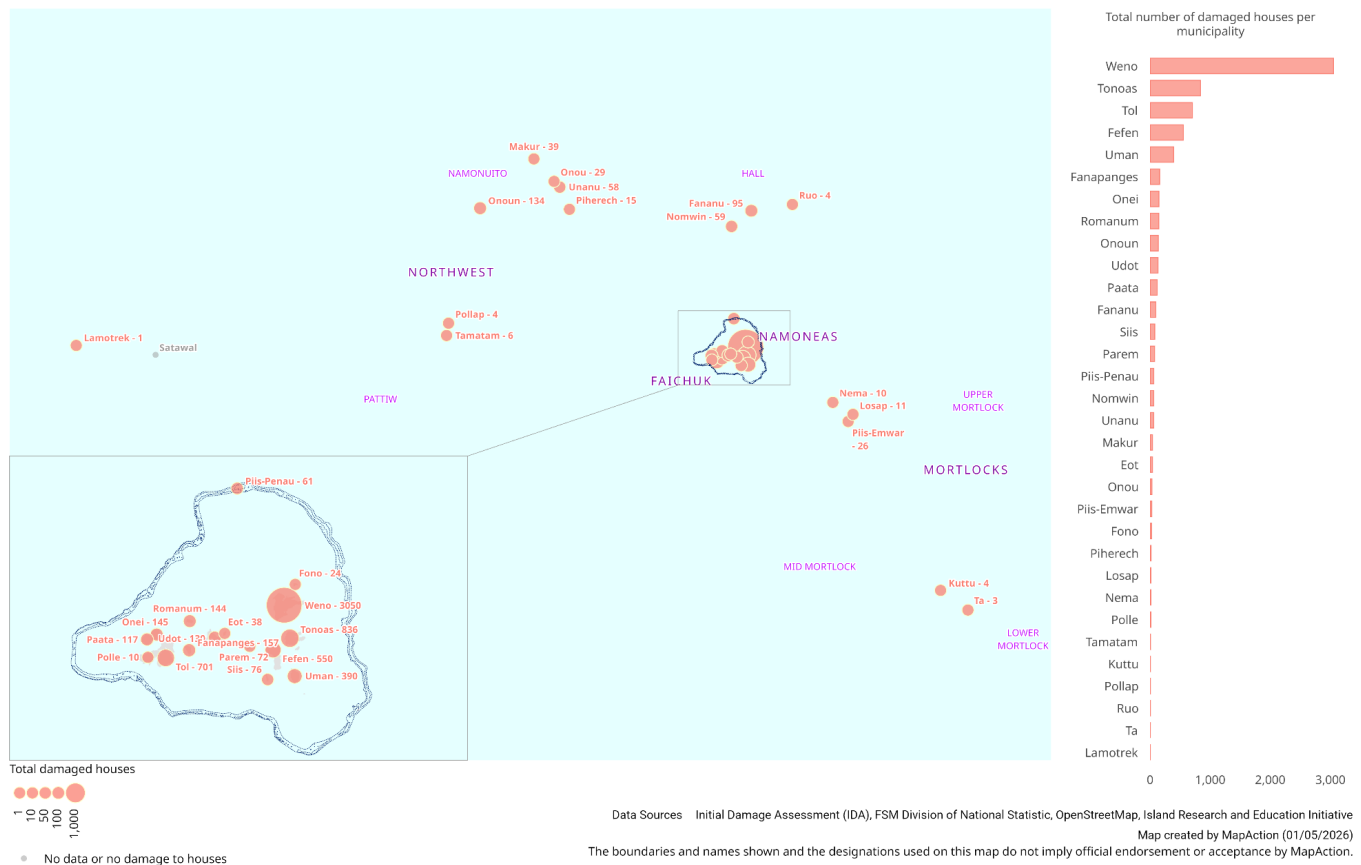
The response is moving from immediate emergency relief toward early recovery planning, but life-saving needs remain. Priority actions include maintaining safe water and food assistance, supporting displaced and host households, protecting health services, restoring rainwater catchments and utilities, strengthening outer-island logistics, and using the JDA process to transition from IDA-based relief prioritization to recovery and reconstruction planning.

Response efforts have been ongoing. Distributions of food and water have taken place across affected municipalities. Progress has been made in re-establishing water systems through reverse-osmosis and repairs to rainwater catchment and other critical water services and public health related needs. WASH supports. For the lagoon islands, clean-up and source protection of spring water sources is critical.

Nearly 7,000 houses sustained minor or major damage, or were destroyed, across 32 assessed municipalities. A significant number of damages has been reported in Weno, Tonoas and Tol municipalities. Each outlying island represents a life-support system that sustained unless the destruction of crops, water infrastructure and shelters is effectively addressed.

A significant number of basic service infrastructures sustained damage or were destroyed across the affected municipalities, including damage of 52 school buildings, 32 health/dispensaries, 291 community halls and 55 church buildings.

 The Federated States of Micronesia: Typhoon Sinlaku
Damaged houses (minor, major and destroyed) per municipality



HUMANITARIAN RESPONSE

Shelter

Needs:

- Damage to homes has been considerable with families across the affected region living in houses that have suffered damage. Lack of adequate shelter has forced populations to leave their homes
- Schools are continuing to be used as temporary shelters hindering the resumption of classes

Response:

- IOM distributed 153 Kitchen Sets, 20 Dignity Kits, 150 Tarpaulins, 121 Jerry Cans, distributed in Weno, Fanpanges, Piispaneu and Parem
- Micronesia Red Cross Society (MRCS) Chuuk State planned distribution of- 347 Tarps, 337 Kitchen sets and 140 Shelter tool kits

Gaps & Constraints:

- Shelter kits and tarpaulins to shore-up damaged homes while reconstruction efforts move forward
- Emergency support for sites for displaced persons including integrated WASH
- Heavy reliance on vessels serving outer islands - due to size/weight of shelter kits
- Limited logistics capabilities to bring shelter and NFI related items
- Temporary accommodation for families displaced due to damage and destruction of their homes

Health

Needs:

- Continuous access to essential medicines and preventive supplies needed for Chuuk State Hospital
- Restoration of functionality of outer islands dispensaries, many of which lack essential medicines (antibiotics, ORS, NCD drugs) or are partially/non-functional
- Sustained disease surveillance and sanitation interventions
- Health outreach to lagoons and outer islands
- Referral pathways for movement between health structures have been affected by damage to sea ambulances and other transports (skiffs etc)
- Limited logistics to support movement of supplies to dispensaries
- Repairs to fire damaged Chuuk State Hospital - resulting from electrical fire
- Repairs to the roof of the Chuuk State Hospital and other health infrastructures

Response:

- The response is led by Chuuk State DHS, coordinated with the Chuuk Disaster & Emergency Operations Center (DEOC) and FSM DHSA, with technical support from WHO, UNICEF, and IOM
- DHS Emergency Operations Center (EOC) is activated to ensure provision of health services
- Chuuk State Hospital remains operational on generator power as the main referral facility

- Community health centers functioning with limited surge capacity
- Planned DHS-led medical outreach missions to outer islands to:
 - Restore primary health care and deliver essential medicines and ORS
 - Implement targeted deworming and diarrhea disease interventions
 - Verify facility status and population health needs
- Mobilization and distribution of Interagency Emergency Health Kits, diarrhea disease kits, Acute Watery Diarrhea community kits, and albendazole
- Targeted distribution of supplies prioritizing water treatment, essential medicines, and cold-chain-dependent commodities (e.g., immunization)
- Syndromic surveillance ongoing with >50% reporting completeness; no outbreaks reported
- Strengthening indicator-based and event-based surveillance with WHO support, especially in under-reporting outer islands
- Health teams (doctors and nurses) have deployed to the Northwest to immunize and assess
- Assessments ongoing in dispensaries and selected schools
- Medications have been pre-positioned; national stockpiles ready upon Chuuk request
- WHO teams on the ground; second team deploying to hospital
- One cholera case was confirmed in Weno - non-epidemic strain and therefore no outbreak
- Vector control supplies (mosquito torpedoes) have been delivered
- Health messaging is ongoing via SMS via FSM Telecommunications Corporation
- Prevention and early management of diarrhea diseases, leptospirosis, dengue, wound infection, and soil transmitted helminths
- Continuity of care for noncommunicable diseases to prevent severe complications

Gaps & Constraints:

- WHO supplies were delayed at DHL due to customs and tax clearance issues
- Unclear timeline for distribution of mosquito control supplies to islands
- Need to balance national support with strong state-led coordination
- Severe access constraints to outer and northwest islands due to transport disruption, debris, fuel shortages, and port limitations
- Disrupted referral pathways for emergency and specialized care
- Under-reporting from remote islands (30–45% coverage) caused by communication failures, leading to likely underestimation of needs
- Medicine shortages and infrastructure damage across the >70 island dispensaries network
- Dependence on generators and fragile supply chains for hospital operations
- Limited staffing capacity, with reliance on single health assistants in many locations

Education

Needs:

- A total of 52 (IDA) schools suffered major damage such as loss of classrooms, toilets and water facilities and learning materials and equipment (computers, notebooks etc)
- Provision of temporary learning spaces to ensure learning continuity
- Provision of teaching learning materials and protection measures
- Department of Education (DoE) warehouse roofs is damaged and in need of repairs
- Clearing of debris and fallen trees for access to school premises
- Schools in atoll islands with damage to rainwater catchment needs temporary solution
- Disruption of classes due to schools used as shelter
- Around 9 schools reported damage to their sanitation facilities

Response:

- A Temporary Learning Center with solar fans & drinking water filters was established at Chukuram Elementary School and Fason High School
- Ongoing support and coordination between CDEOC, State DoE, with UNICEF and UN partners.
- Assessment for repairs to the DoE supplies warehouse commenced
- DoE deploying teams to the Northwest to undertake assessment of schools, distribute cleaning equipment, water filters, hygiene kits and tents
- Tarps and cleaning equipment distributed to Penia and Peniesene Elementary Schools

Gaps & Constraints:

- Limited number of temporary learning facilities, and water and sanitation facilities in schools
- Teaching and learning materials, and school equipment
- Further assessments required to determine education infrastructure damage
- Access to transportation, supplies and available human resources to support school rehabilitation

 **Food Security & Agriculture**

Needs:

- Food insecurity among most acute sectoral needs identified. Current food stocks are acutely limited
- Crop destruction is widespread. Full damage or destruction of banana crops, breadfruit/taro/yam, coconut and cassava. Nearly 50% of municipalities reported loss of livestock
- Saltwater intrusion has compounded crop losses, particularly for taro patches rendering crops inedible. Banana trees have been toppled, and coconut palms along shorelines have eroded. The combination of wind damage, saltwater intrusion, and storm surge has substantially reduced the subsistence food base, with recovery timelines for tree crops measured in months to years
- Priority areas require sustained food assistance to prevent a deterioration in nutritional status

Response:

- The Chuuk State Government is continuing with the distribution of food and water to the other affected islands. To date a total of 4683 sacks of rice, 7,693 cases of water, 761 cases of tuna, 2,545 cases of mackerel, 30 cases of luncheon meat, 1,500 cases of chicken
- Items from the National Government distributed to the Mortlocks islands include a total of 2271 bags of rice, 6050 cases of water, 1781 cases of tuna, and 1781 cases of Mackerel. National Government will be continuing food relief efforts to the Northwest Islands in the coming days
- IOM Supported the DCO with 100 gallons of fuel in 4 trips on their skiffs to distribute food items and water in Piis Paneu

Gaps & Constraints:

- Logistical constraint around available transportation, cost of transportation and availability/distribution of food items. Lack of availability of Staff for distribution
- Lack of food relief supplies available on island

Water and Sanitation

Needs:

- Immediate access to safe drinking water due to extensive damage to water catchments
- Widespread contamination of community water sources increases the need for water treatment supplies, safe storage and hygiene support at household or facility levels.
- Preparedness for worsening water scarcity linked to anticipated El-Nino related drought.
- Risk communication materials in local language to mitigate the risk of water-borne diseases and promotion of water conservation. Operation and maintenance capacity for deployed RO units.
- Need for sanitation assessment and immediate support for households and public facilities that are functioning as emergency shelters.
- Sanitation assessments linked to disease prevention.

Response:

- A reverse osmosis unit was deployed to Fanapanges by IOM. Additional WASH supplies mobilized.
- 600 Jerry Cans from IOM were delivered to the Northwest region, along with 100 jerry cans to Chuuk Public Health Department.
- 151 Hygiene Kits were distributed in Fanapanges Islands and Iras Village, Weno by UNICEF

Gaps & Constraints:

- Some communities previously received reverse osmosis units without trained operators.
- Training gaps risk underutilization of available water systems.
- A gap of 2000 Water, Sanitation and Hygiene Kits in Chuuk.
- Continued contamination of water sources with limited water treatment options.
- Water storage capacities in communities have not been restored compounding risk from looming drought, likely to prolong water insecurity and disease transmission risks

 **Public Safety & Protection**

Needs:

- Sensitization on child safeguarding for task forces, assessment and response teams who are in direct contact with affected communities
- Detailed information on persons with disabilities on types of impairment and specific needs.
- Agencies undertaking community feedback to collaborate on the addressing of feedback.
- Protection risks are elevated, although protection-specific incident data remain limited.
- Displacement, damaged homes, school closures, school use as shelters, water shortages, communications gaps and isolation of remote communities increase risks for children, women, older persons, persons with disabilities and households with limited mobility or social support.
- Various risks to public disquiet are impacting affected populations. Concerns around the global energy crisis, discontent with lack of utilities and administrative processes exacerbate risks to safe and secure distribution modalities.
- This places additional pressure on response operations as the attempted distribution of much-needed commodities in high pressure situations.
- Movements to outer islands requesting police officer escorts have limitations due to issues related to political controversy

Response:

- Additional fuel to the Department of Public Safety to enable them to continue their inter-island work.
- Child protection training planned for Chuuk Women's Council and Dept of Health and Social Affairs.
- Responders in visible identification to indicate their agency or organization to affected communities.

Gaps & Constraints:

- Due to elevated concerns in Weno, limitations on movement and presenting to work were put in place for the 1st of May. Humanitarian responses including missions to lagoon islands were curtailed as a result.
- Sufficient human and security resources to safely distribute in contexts of deprivation and stress.
- Sufficient humanitarian training and capacity to manage operations in operational contexts with elevated risks.
- Available sources indicate elevated protection risks but do not provide a verified incident level picture for gender-based violence, exploitation and abuse. Continued protection monitoring and referral-pathway mapping are required, especially where assistance arrival remains delayed.
- Inter-island transport for Public Safety.

Energy and Utilities

Needs:

- While considerable progress has been made, some areas remain without electricity.
- Intervention is required regarding the proposed fuel price increase by Vital, which is estimated at approximately 70% for utilities and could result in a tariff increase of 40%. With Chuuk State still recovering from the typhoon, such an increase would place additional strain on households, businesses and emergency responders.

Response:

- National Taskforce in place to consider options to address the global energy crisis.
- Chuuk State Public Utilities Corporation (CPUC) remains in full restoration mode. Crews continue working 7 days a week to restore service to all remaining customers as quickly and safely as possible. CPUC continues reconnecting homes and businesses in central areas where main lines are already energized but individual service connections are still pending.
- Linemen from Yap have joined CPUC inspectors to accelerate reconnections in both central and outer areas where main lines are already energized but customers are not yet connected.
- CPUC has repaired and energized the main lines in Mwan, Neauo, Wichap, and Epinuup. Several damaged poles were replaced to restore services.
- CPUC CEO Kembo Mida Jr. met with His Excellency Wesley W. Simina to provide an update on restoration efforts across Weno and Tonoas. CEO Mida expressed appreciation to the President for a \$300,000 appropriation to support CPUC's restoration of services.

Gaps & Constraints:

- More time is needed to ensure comprehensive reconnection of electricity lines.
- Access to severely affected locations and fuel is a key capacity constraint affecting the response.
- Supplies of power-poles, lines and solar panels are difficult to procure due to limited supply on the island.

Transport & Infrastructure

Needs:

- Telecommunications:
 - Restore mains power supply to enable full repair and commissioning of the telecommunications network, with priority for the western lagoon area where operations remain limited.
 - Conduct comprehensive technical assessments and restore communication services across all Outer Islands, where current status and damage levels are still largely unconfirmed.
 - Complete network connections to Tonoas Island and surrounding nearby islands to ensure full coverage within the immediate lagoon zone.

Response:

- Telecommunications:
 - 68 % of overall telecommunications services across Chuuk State have now been restored and are operational.
 - Repairs to the main fiber-optic trunk line are nearing completion, with connectivity currently extended as far as Xavier High School in Weno.
 - 62 % recovery rate for fiber-to-home connections within the Weno urban area.
 - Cellular network coverage in the Mortlock Islands is fully operational.
 - Standby generators have been deployed and are now supporting all key telecommunication towers and critical sites to ensure continuity during power interruptions.
 - Formal coordination has been established with the WFP FITTEST Team to align assessment, technical support, and restoration activities.
 - Additional surge technical support is on standby and can be deployed from Pohnpei if required to accelerate progress or address complex issues.

Gaps & Constraints:

- Telecommunications:
 - Western Lagoon Delays: Repairs and full-service restoration on the western side of the lagoon remain significantly delayed due to the ongoing lack of mains power. While a standby generator is currently powering the main tower at a minimum level, this is a temporary solution and limits the scope of repairs and service quality.
 - Remote outer islands have not yet been reached or assessed, meaning the extent of damage, current operational status, and specific restoration needs remain unknown.
 - Power and Logistics Dependencies: Completion of remaining restoration works is heavily dependent on two key factors:
 - Restoration of reliable mains power supply across priority areas;
 - Availability of transportation to access remote locations and deliver equipment and supplies.

**Needs:**

- Oil leakage from the 2 capsized vessels Chief Mailo and Ballina in Weno Port has increased in recent days exacerbating environmental concerns and secondary hazards
- Retrieval of vessel general arrangement plans from the captains' cabins and a pending diver inspection to finalize defueling strategies
- Clearance of the staging area and appropriate supports to enable defueling efforts.
- Review of documented defueling options and final disposition of the Chief Mailo
- Assembly of required defueling equipment and appointment of a qualified defueling operator

- Skimmers for the recovery and adequate high sea booms are required. Surveillance of contaminations needs to continue
- Spills near Chief Mailo and Ballina vessels require an exclusion area for fishing
- MoU should include (if feasible) tapping equipment and skimmers
- Waste management required for defueled substances

Response:

- The Department of Transport and Environment Protection Agency have worked with the UN Environmental Emergency Response (EER) team to conduct joint inspections to evaluate diesel seepage and defueling approaches
- Improved booming configurations and use of sorbents are capturing rainbow sheens from submerged starboard tanks of Chief Mailo; technical advice is provided to extend booms inward at concrete corners to prevent escapes
- Black-colored oil contamination is now visible, probably originating from hydraulic fluids
- On site scrapping is recommended as experts advised against righting the vessel due to structural risks, including hull cracks and potential collapse
- EPA supported with protocols for segregating oiled sorbent pads as hazardous waste for disposal via incineration or hazardous material landfill

Gaps & Constraints:

- Chief Malia's 450-gross tonnage and floodwater volume pose a significant risk of collapse if towed
- Definitive defueling options remain pending until diver inspections are completed and structural plans are retrieved
- All technical recommendations are reliant on resource availability, which is limited

COORDINATION

- **Assessments:**
 - Initial Damage Assessments (IDA) completed for 40 municipalities in Chuuk and 2 in Yap
 - Joint Damage Assessment (JDA) by US DoS and FSM initiated. Assessments have taken place across Weno and are planned for outlying islands in the forthcoming days
 - Satellite analysis has expanded to cover additional islands
- **Coordination Mechanisms:**
 - A coordination meeting was held at the CDEOC on Tuesday 28 April
 - Partners were encouraged to join and engage at the Task Force meeting as the preferred coordination mechanism rather than parallel mechanisms
 - Joint national, state and UN monitoring missions took place to support implementation of assessments and response activities
 - The President of the Federated States of Micronesia engaged with the UN Resident Coordinator to discuss ongoing operations and related coordination modalities

- Preparations continued for the forthcoming Joint Risk Management Network Meeting scheduled for Tuesday May 5th

FUNDING AND PARTNER SUPPORT

- The Pacific Risk Catastrophe Insurance Company has paid 375,000 USD to the Govt of the Federated States of Micronesia after its parametric insurance policy was triggered
- The Central Emergency Response Fund (CERF) total of 1m USD was released by Tom Fletcher, Emergency Response Coordinator and head of the UNOCHA
- The Ayuda Foundation contributed water, WASH equipment and non-food items

RECOMMENDATIONS

- Enhance coordination through regular taskforce meetings at Emergency Operations Center with full participation of key decision makers
- Ensure adequate resources for the operation of the Emergency Operations Center
- Ensure comprehensive understanding of the crisis with relevant national and international stakeholders and mobilize additional resources for emergency response
- Ensure access of responders to affected populations, and of populations to services - noting access to fuel as a key enabler
- Strategic review of state transportation capacities and restoration to minimum requirement levels
- Subnational warehousing support is required to support pre-positioning of essential supplies

For further information, please contact:

Chuuk Disaster and Emergency Operation Center
Director Justin Fritz, Tel: 330-5520, Email: chuukcdeoc@gmail.com