



FEDERATED STATES OF MICRONESIA, CHUUK STATE

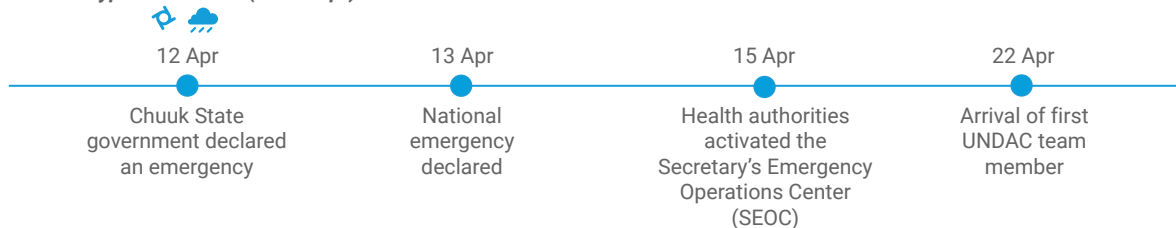
Typhoon Sinlaku - Humanitarian Snapshot

As of 2 May 2026

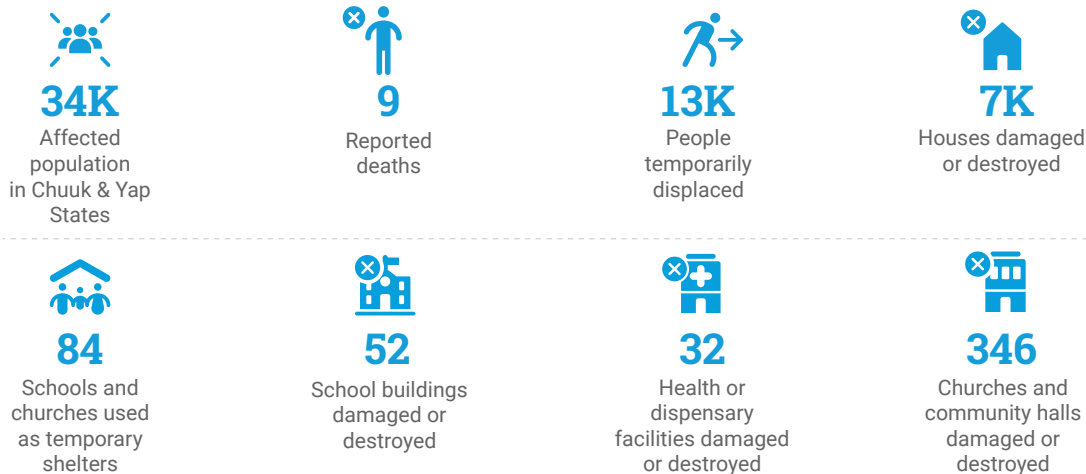
SITUATION OVERVIEW

Typhoon Sinlaku triggered a state-wide humanitarian emergency in Chuuk State after remaining over the lagoon area for approximately three days (9–12 April). During this period, the system intensified from a tropical depression (29 mph) to a Category 5 super typhoon, reaching peak winds of 177 mph on 13 April while still in proximity to Chuuk, before moving toward the Marianas. The Chuuk State Government and the national Government of the Federated States of Micronesia have declared states of emergency and activated response coordination mechanisms. Destructive winds, heavy rainfall, storm surge, saltwater intrusion, and prolonged disruptions to essential services have resulted in significant humanitarian needs, particularly related to safe water, food, shelter, health risk mitigation, access, and restoration of critical services.

Typhoon Sinlaku (9 - 12 Apr)



KEY FIGURES



Note:
Figures are based on preliminary findings of the Initial Damage Assessment (IDA).

